



MONTAGE
RESIDENCES

HEALDSBURG

175 SYCAMORE COURT | HEALDSBURG, CALIFORNIA

Estate Homesite 21



175 SYCAMORE COURT

Estate Homesite 21

With vistas of the resort's estate vineyards and expansive views of the cascading hills that grace Dry Creek Valley, Estate Homesite 21 provides an exceptional setting for your legacy custom home within Montage Residences Healdsburg. Enjoy breathtaking sunset views framed by a stand of century-old oak trees, as well as close access to all resort amenities, including the signature Spa Montage. Situated on a secluded court, Estate Homesite 21 presents the ideal location for creating lasting memories amidst the Sonoma countryside. Alternatively, homeowners can opt to commission a custom design for this homesite by an architect of their choosing that maintains the property's aesthetic vision and standards.



ESTATE HOMESITES 

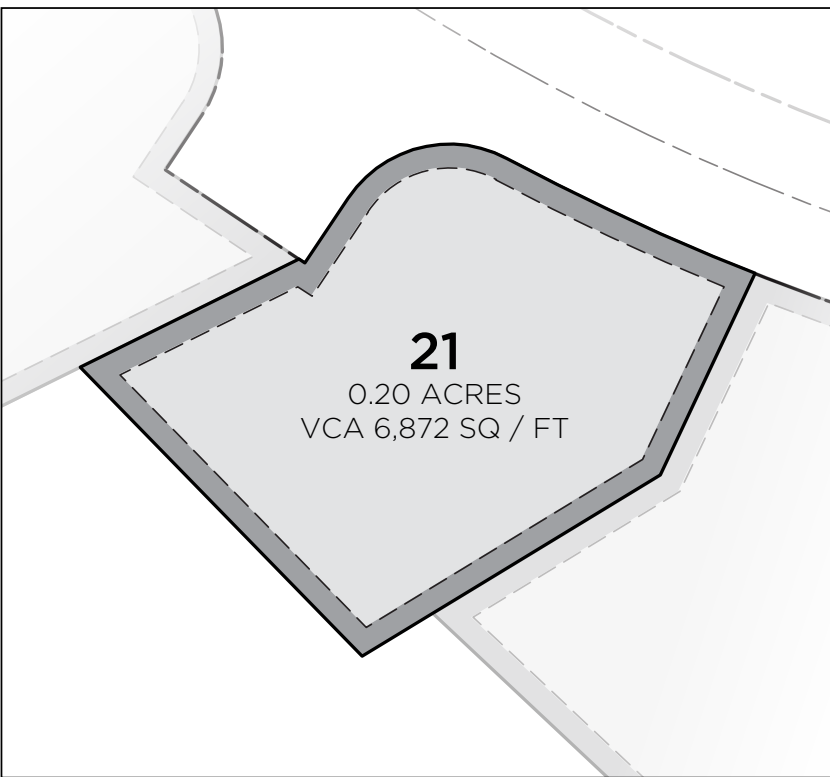
HARVEST HOMESITES 

MONTAGE HEALDSBURG RESORT 



ESTATE HOMESITE 21

Homesite Diagram



LOT ACREAGE
0.20 Acres

BUILD HEIGHT
26 FT*

VERTICAL
CONSTRUCTION AREA
6,872 SQ / FT

*Subject to verification from the City of Healdsburg and the Design Review process.

Homesite Features

HOMESITE SIZE
8,656 SQ / FT

VIEWS
Sweeping, southwest-facing views capture sunsets, glimpses of the resort's hillside vineyards and the ridges of Dry Creek Valley beyond.

LOCATION
Estate Homesite 21 enjoys a quiet end-of-street location just minutes away from all resort amenities.





From its tranquil end-of-street setting, Estate Homesite 21 promises nature-steeped privacy as well as far-reaching southwest views that encompass nearby resort vineyards, dense woodlands and Dry Creek Valley in the distance.

COMMISSIONED FOR ESTATE HOMESITE 21

Estate Home G

Estate Home G is a contemporary architectural residence commissioned for the homesite at 175 Sycamore Court. Featuring more than 5,000 square feet of indoor-outdoor living space, this home is designed to embrace the natural environment with its unique “walk-down” configuration that conforms to the site’s topography. Estate Home G boasts a light-filled open kitchen and living spaces that extend onto a generous covered terrace with an outdoor fire pit. Additional features include an outdoor shower in the primary suite, a lap pool, hot tub and golf cart storage.







Home Features

5 BEDROOMS

5 FULL + 1 HALF BATHROOMS

INDOOR AREA
4,780 SQ / FT

OUTDOOR AREA
1,680 SQ / FT

GARAGE AREA
719 SQ / FT

POOL AREA
500 SQ / FT

TOTAL AREA
7,679 SQ / FT

PRIVATE TWO-CAR GARAGE

LARGE OUTDOOR TERRACE
WITH POOL AND SPA

SPACIOUS OPEN-PLAN
KITCHEN WITH OVERSIZED
EAT-IN ISLAND





The primary suite is replete with a balcony, soaking tub and private terrace with an outdoor shower.



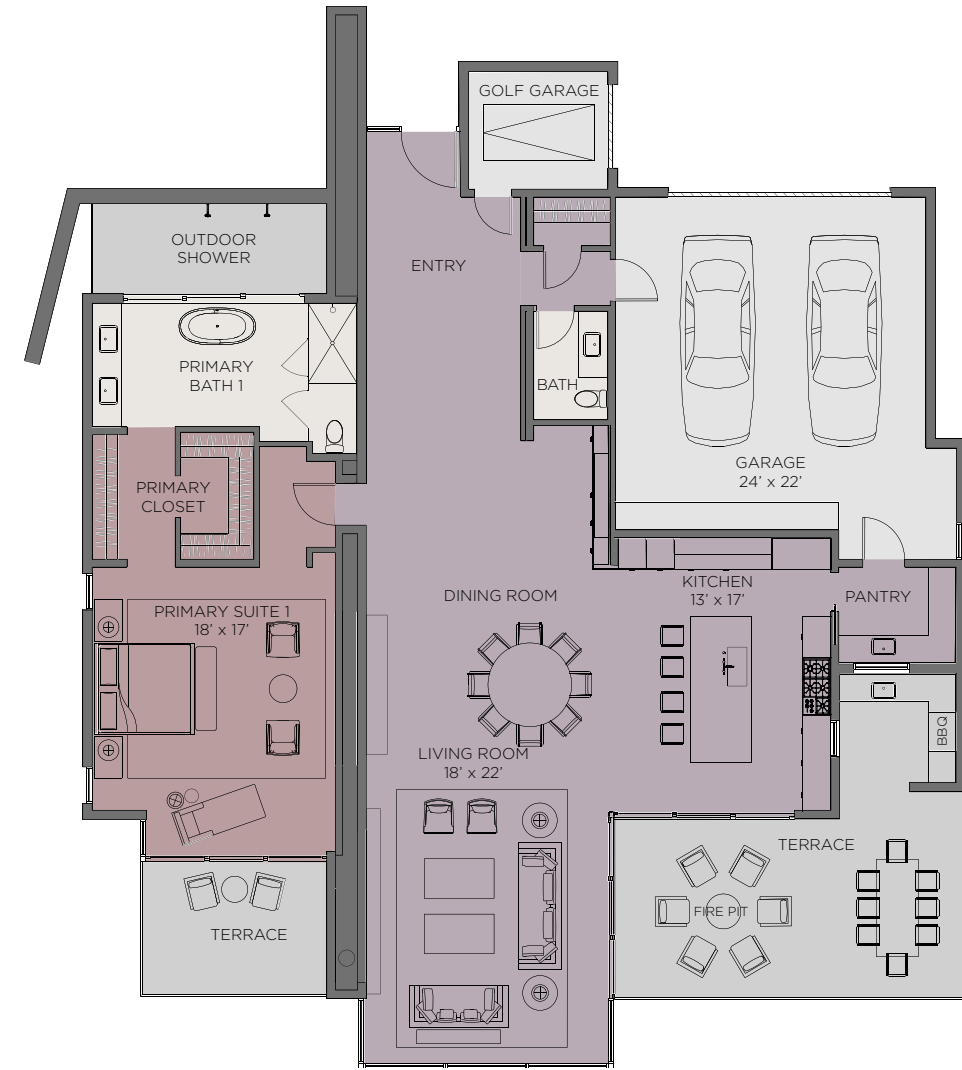
HOME DESIGN G

LOWER LEVEL

Floor Plan



UPPER LEVEL



5 BEDROOMS

5 FULL + 1 HALF BATHROOMS

7,679 TOTAL SQ / FT

PRIVILEGES AND ACCESS

Residential Ownership

Life at Montage Residences Healdsburg is designed to be effortless. Homeowners enjoy easy access to all Montage signature services and amenities as well as thoughtful, highly personalized attention from the dedicated residential staff. Every home is perfectly suited to you and your family's needs from the moment you arrive. Focused on delivering the highest standard of comfort, privacy and luxury, turnkey living awaits at Montage Residences Healdsburg, where owners enjoy all that Northern Sonoma wine country has to offer.





ESTATE WINE PROGRAMMING

Spearheaded by renowned winemaker Jesse Katz, our vineyards will produce estate vintages, with residents receiving privileged access to special releases, private tours and tastings, exclusive events—even a row of vines named for each founding owner at the resort's private vineyards.

RESIDENTIAL SERVICES

All residents enjoy exclusive resort access and personalized services afforded by Montage's dedicated residential staff, who can arrange customized experiences within the resort or provide dining reservations, bespoke wine experiences, special activities and more within the area.



CLOSE PROXIMITY TO RESORT AMENITIES

Homeowners enjoy seamless access to Montage Healdsburg's amenities—from pickleball and truffle foraging excursions to relaxing, regionally inspired Spa Montage services, Paintbox children's immersive program and locally sourced fare at the resort's chef-led restaurants.

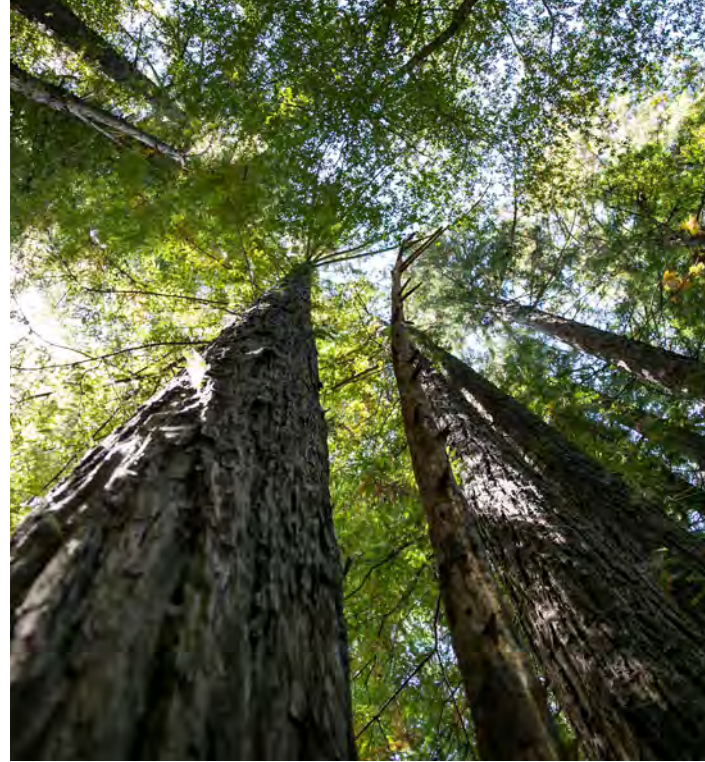
BENEFITS THAT EXTEND BEYOND YOUR HOME

Owners at Montage Residences Healdsburg enjoy a celebrated world of privileges and benefits that extends beyond the reach of home and provides access to the portfolio of both Montage Hotels & Resorts and Pendry Hotels & Resorts. This includes a preferred array of special discounts and offerings as well as access to related travel and lifestyle exclusive opportunities.

DESTINATION

A Wine Country Retreat Rooted in Heritage

In Healdsburg, timeless traditions and new adventures are unearthed every season of the year. Here, days are spent basking in Northern Sonoma's natural beauty, dining on irresistibly fresh cuisine from Michelin-starred restaurants and James Beard Award-winning chefs, sipping the region's world-famous wines, shopping the boutiques of downtown Healdsburg and exploring a broad range of carefully preserved natural spaces. When Healdsburg is home, it's all within reach.





Montage Residences Healdsburg
exclusively offered by



CURTIS TISCHLER

Healdsburg@OhanaRE.com | 949.395.0553

MontageResidencesHealdsburg.com

Sonoma Luxury Resort LLC (the "Developer") is developing The Resort and Residences at Passalacqua Drive, also referred to as Montage Residences Healdsburg (the "Residences" or "MRHB") which are being offered for sale by the Developer through Ohana Realty Corp. ("Ohana Realty"). MRHB is not owned, developed, or sold by Montage Hotels & Resorts LLC or its affiliates (collectively, "Montage") and Montage does not make any representations, warranties or guarantees whatsoever with respect to MRHB or any part thereof. The Developer uses the "Montage" brand name and certain Montage trademarks (collectively, the "Trademarks") in connection with the sales and marketing of the Residential Units in the MRHB under a limited, non-exclusive, non-transferable and non-sublicensable license. The foregoing license may be terminated or may expire without renewal, in which case neither the Residential Units nor any part of MRHB will be identified as a Montage branded project or have any rights to use the Trademarks. Montage does not have any responsibility for the development, offering, marketing, sale or solicitation of the Residences, the contents of any governing documents and any offering and sales documents (including, without limiting, the budgets therein), or the sales and marketing process (including, without limiting, any sales or marketing materials and any statements or representations by Developer, brokers or sales persons). This is not an offering of property in any jurisdiction where prior registration is required and no material will be disseminated into such jurisdictions unless the Developer has met such requirements. Void where prohibited by law. Purchasers will be subject to mandatory membership in a governing condominium association and a master property owners' association, which will require the payment of dues and assessments that are separate and apart of any purchase price paid for a Residence. Access to and rights to use recreational and hotel amenities within the Hotel and Residences developments may be subject to payment or use fees, membership requirements, or other limitations. Sketches, renderings, graphic materials, plans, specification, amenities, prices, terms, conditions, and statements contained in this advertisement are proposed only, and the Developer reserves the right to modify or withdraw any or all of the same in their sole discretion and without prior notice. Actual improvements may vary from those shown and views may not be available from all units. Square footage is approximate and units are not sold based upon square footage. Furnishings shown may not be of a particular unit and are subject to change. Some features shown may be options or upgrades which may not be part of a unit. Such details will be set forth on a Purchase Agreement to acquire a Residence.

Copyright © - Sonoma Luxury Resort LLC - All rights reserved.

WARNING: THE CALIFORNIA BUREAU OF REAL ESTATE ("CALBRE") HAS NOT APPROVED OR ENDORSED THIS OFFERING. A COPY OF THE PUBLIC REPORT MAY BE OBTAINED FROM THE OWNER, SUBDIVIDER, OR AGENT AT ANYTIME UPON ORAL OR WRITTEN REQUEST. THE DEVELOPER IS CURRENTLY OPERATING UNDER A PRELIMINARY PUBLIC REPORT FROM CALBRE WHICH ONLY ALLOWS FOR THE TAKING OF RESERVATIONS. RESERVATIONS ARE NON-BINDING. DEVELOPER MAY NOT NEGOTIATE THE SALE OR LEASE OF LOTS OR UNITS WITH BUYERS UNTIL A CONDITIONAL OR FINAL PUBLIC REPORT HAS BEEN ISSUED BY CALBRE. 🏠